

# smartCARS 3 | XPUIPC for X-Plane 11/12

In order to fly with Walker Air Transport using smartCARS 3 and X-Plane 11 or 12, you are required to install XPUIPC plugin and set smartCARS 3 accordingly. The UDP option in smartCARS 3 has a bug and will not record your livery, and as a result you will have rejected flights every time. The way our virtual airline operates and the autonomous systems we have in place, we are not able to manually approve each and every pilot's flight because of this bug.

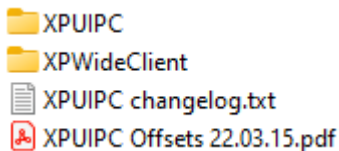
Please follow these instructions and if you have any questions reach out to us on Discord or by email.

Lastly, we **STRONGLY** urge our pilot base to submit tickets to TFDi and/or reply to our bug report here: <https://github.com/invernix/smartcars-3-bugs/issues/351>

---

Click here to download XPUIPC for XP11/12.

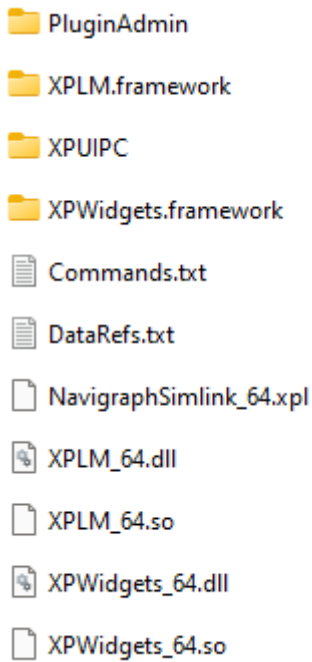
1. Open up the zip file, you want to copy the single folder 'XPUIPC' to your X-Plane 11 or 12 installation. *You can ignore the other files/folders, if you don't know what they are then they do not pertain to you.*



2. Drop the XPUIPC folder into your XP 11 or 12 installation folder / Resources / plugins  
X-Plane 12 > Resources > plugins

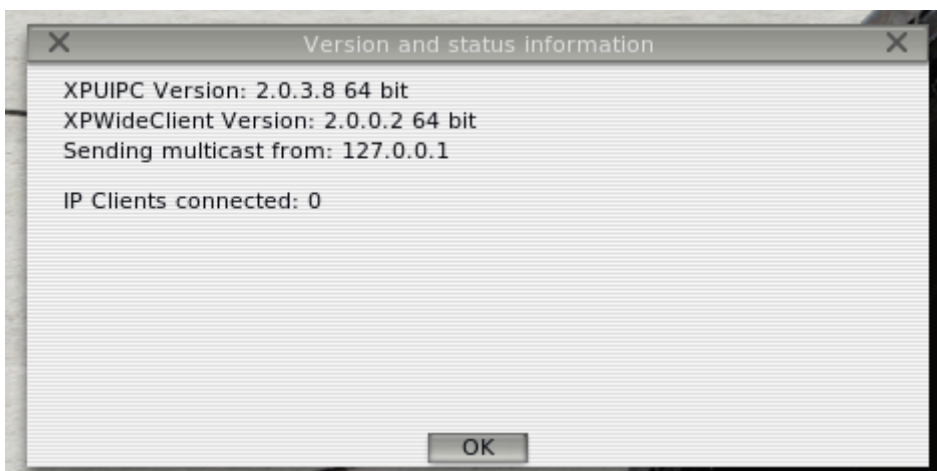
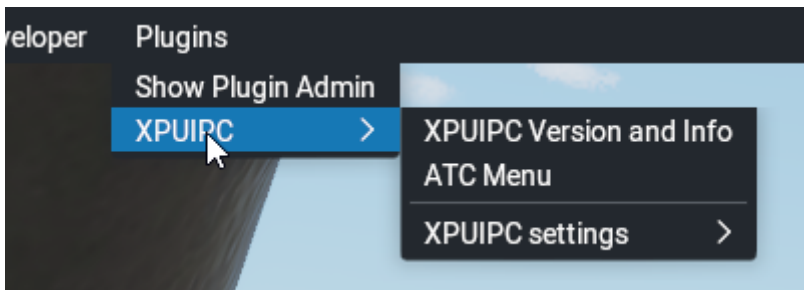
You should see the plugin listed with all your other plugins (*this is a fresh install so there*


*are no 3rd party plug-ins.)*



3. You can verify that the plugin is successfully installed by launching X-Plane and moving your mouse to the top of the screen > Plugins > XPUIPC > XPUIPC Version and Info

If you see this, and the version, you have successfully installed XPUIPC.



4. Open smartCARS 3, and click the  settings button.
5. Scroll down to *Plugin Settings* and click the drop down next to *Tracking Provider* and choose '**fsuipc**'. Ignore the name as it's misleading, this option enables both FSUIPC and XPUIPC tracking. Click the save button at the top right.

Settings

Save

Landings distance units

Landings distance units to use for the application

FT

Plugin Settings

Flight Tracking Settings

Port number of the machine running X-Plane, only used when using X-Plane with UDP

Only used when using X-Plane with UDP

49000

IP address of the current machine

Only used when using X-Plane with UDP

127.0.0.1

Tracking provider

FSUIPC: Uses either FSUIPC or XPUIPC (windows only)

X-Plane: Uses UDP to retrieve data from X-Plane

fsuipc

IP address of the machine running X-Plane

Only used when using X-Plane with UDP

127.0.0.1

Automatic PIREP submission

Whether smartCARS should automatically submit a PIREP when the flight phase changes to DEBOARDING

☒

6. Now start your flight and you will see that the livery is being tracked appropriately in your log file.

Flight Tracking

WAC4711

Boeing 767-300F (N530WA)

626nm to go

KJAX

0h 00mm

KCAK

0h 00mm

11/6/2023 8:42:58 AM Using X-Plane

11/6/2023 8:42:58 AM Flying Boeing767-Extended 763 F Walker Air Cargo White Red

11/6/2023 8:42:58 AM Now boarding

If you have any issues, please do not hesitate to reach out to us.

Revision #2

Created 6 November 2023 13:30:29 by WAT100 Storm W.

Updated 17 November 2024 15:35:08 by WAT100 Storm W.