

Scheduled

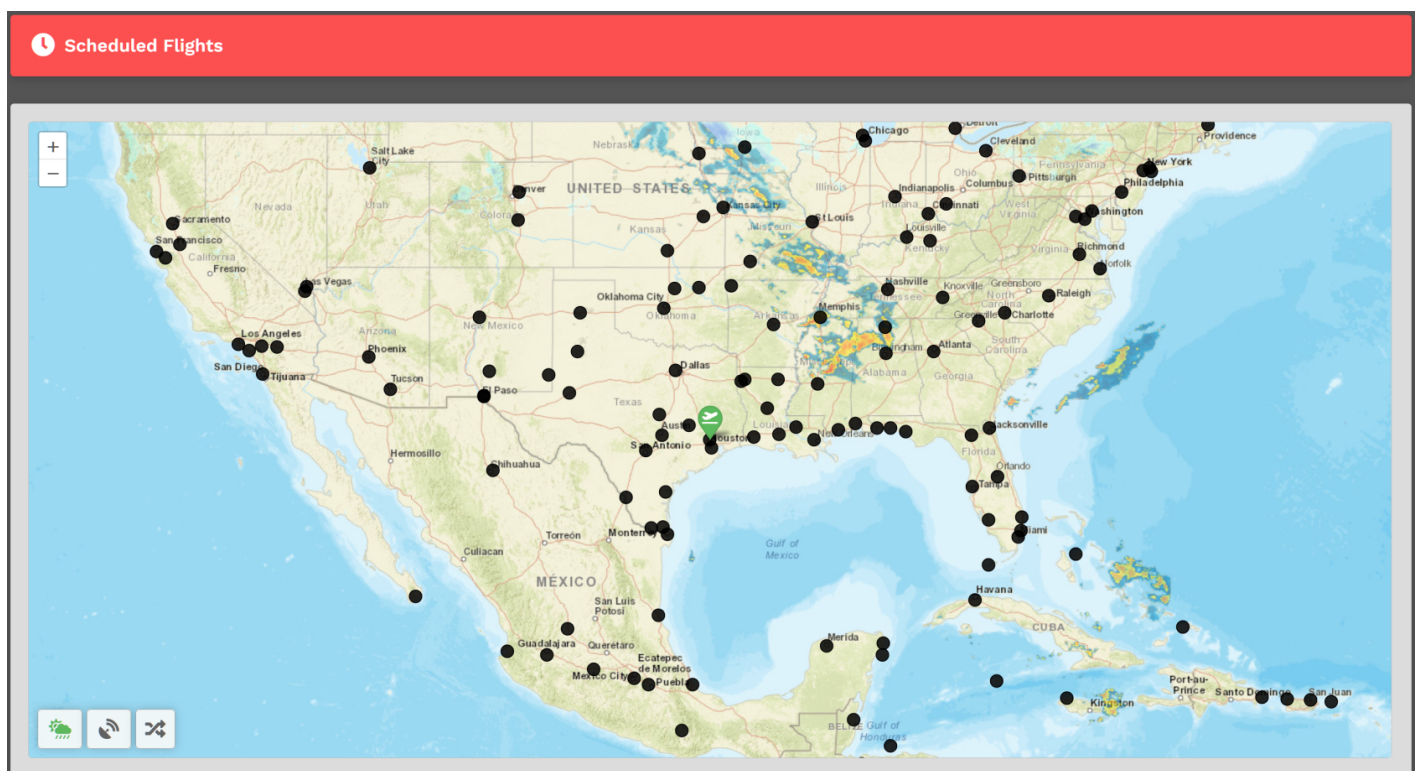
The **Scheduled Flight** Module gives Pilots an opportunity to experience life as a 'Line Pilot' for a major Passenger Airline by using real life flight routes, schedules and aircraft.

There are currently **426,503** routes available to you worldwide.

If you wish to depart from another location, you may purchase a Jumpseat Ticket to transfer to another airport.

Finding a Scheduled Flight

In the *Navigation Bar* of the *Crew Ops* website, select **Flights > Scheduled**. That will take you to the **Scheduled Flights** page.



Upon arrival, you'll be presented with a map. You'll see a departure icon (**Green Map Pin**) and one [1] or more arrival pins (**Black Dots**), as well as **Toggle Weather**, **Toggle VATSIM** and **Select Random Arrival** buttons at the bottom left of the screen.

The map seen above represents its default view. To see the rest of the world, place your cursor on the map and, with your control wheel, zoom in or out.

The departure location for your next flight is set as follows:

New Pilots	All Other Pilots
New Pilots taking their first flight depart from the Home Airport they requested on registration.	The <i>Arrival Airport</i> of your last Cargo or Scheduled flight.

Mouse over pins/black dots to see the names of the airports with flights available from your departure airport.

Once you find a place to which you'd like to fly, click on its black dot. Let's use KIAH > KPDX as an example.

IMPORTANT :: You may only Bid a **new** Scheduled flight when no other Scheduled Flights have been bid. If you have already bid another flight – or – that flight is already in progress, you'll see this message.

You must complete the flight or cancel it in order to bid a new one.

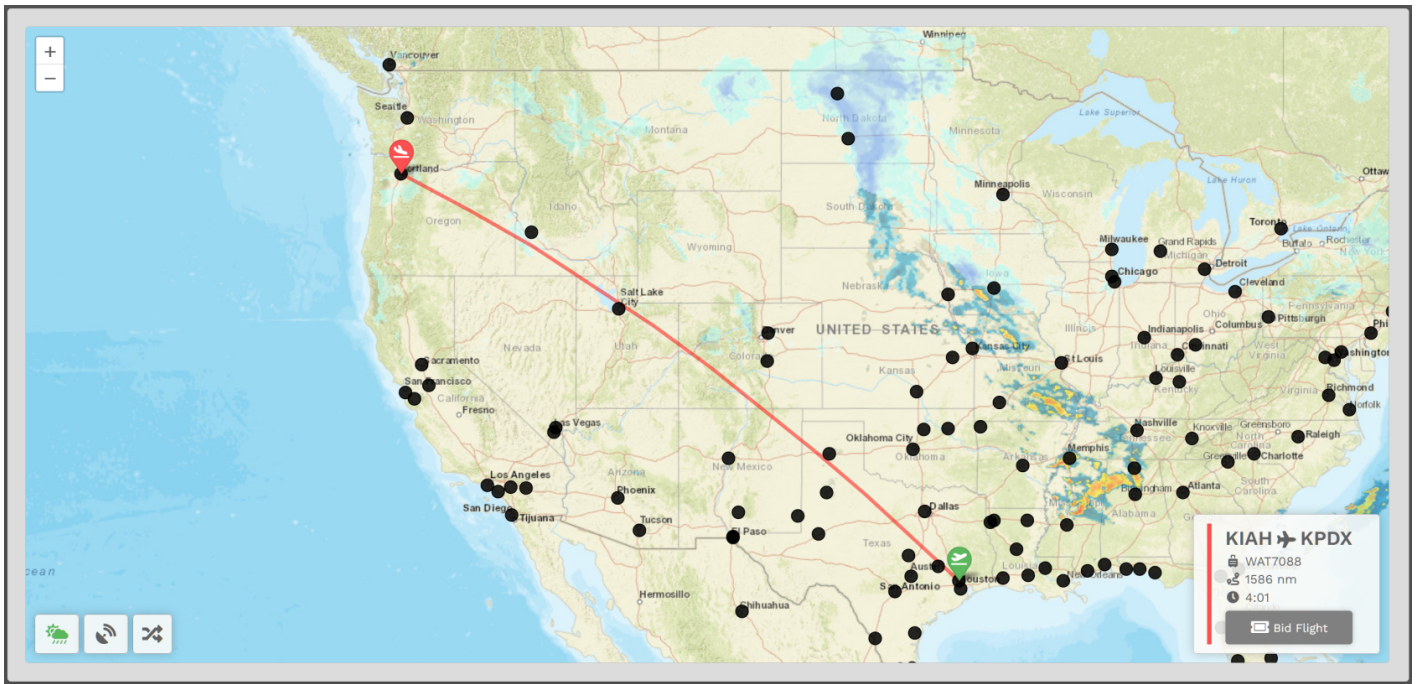


You have already bid on a flight.

You must complete or cancel that bid before making another.

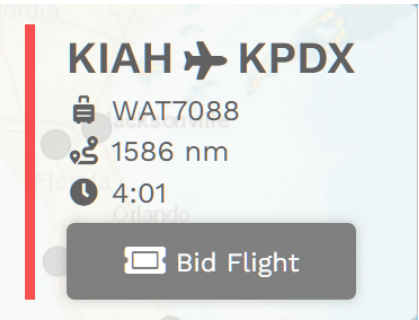
You'll then see your **Flight Bid** appear listing the Flight Number, Distance and Estimated Time Enroute.

*The Estimated Time Enroute is only an estimate and does **not** reflect the time in the aircraft you select.*



Bidding a Scheduled Flight

Click the **Bid Flight** button to bid on the flight.



After doing so, the confirmation window below will appear.

From the drop-down, select an **Aircraft Type**.

Bid Your Flight
✕

Failure to use our liveries will result in your PIREP being rejected.

Please choose an aircraft...
▼

Book

Cancel

We allow our Pilots to chose their preferred aircraft type rather than restricted them to one assigned to the flight.

After selecting your aircraft, click **Book**.

The **Pilot Briefing** will appear signifying the flight has been added your **My Bids** page.

Pilot Briefing
⌕

WAT7088
BILL HARRIS
KTW

KIAH
HOUSTON GEORGE BUSH INTERCONTINENTAL AIRPORT
8:26 UTC

METAR
TAF
RUNWAYS

KIAH 171500Z COR VRB05KT 10SM SCT013 BKN027 BKN250
26/21 A2992 RMK AO2 T02560211

KPDX
PORTLAND INTERNATIONAL AIRPORT
13:27 UTC

METAR
TAF
RUNWAYS

KPDX 171453Z 11006KT 10SM FEW050 06/03 A3028 RMK AO2
SLP252 T00560033 56001

+
-

08:26
⌕
⚙️

-30m -15m now +15m +30m

Generate simBrief OFP
Import Latest simBrief OFP

Flight has not been started in your ACARS application

