

# Cargo

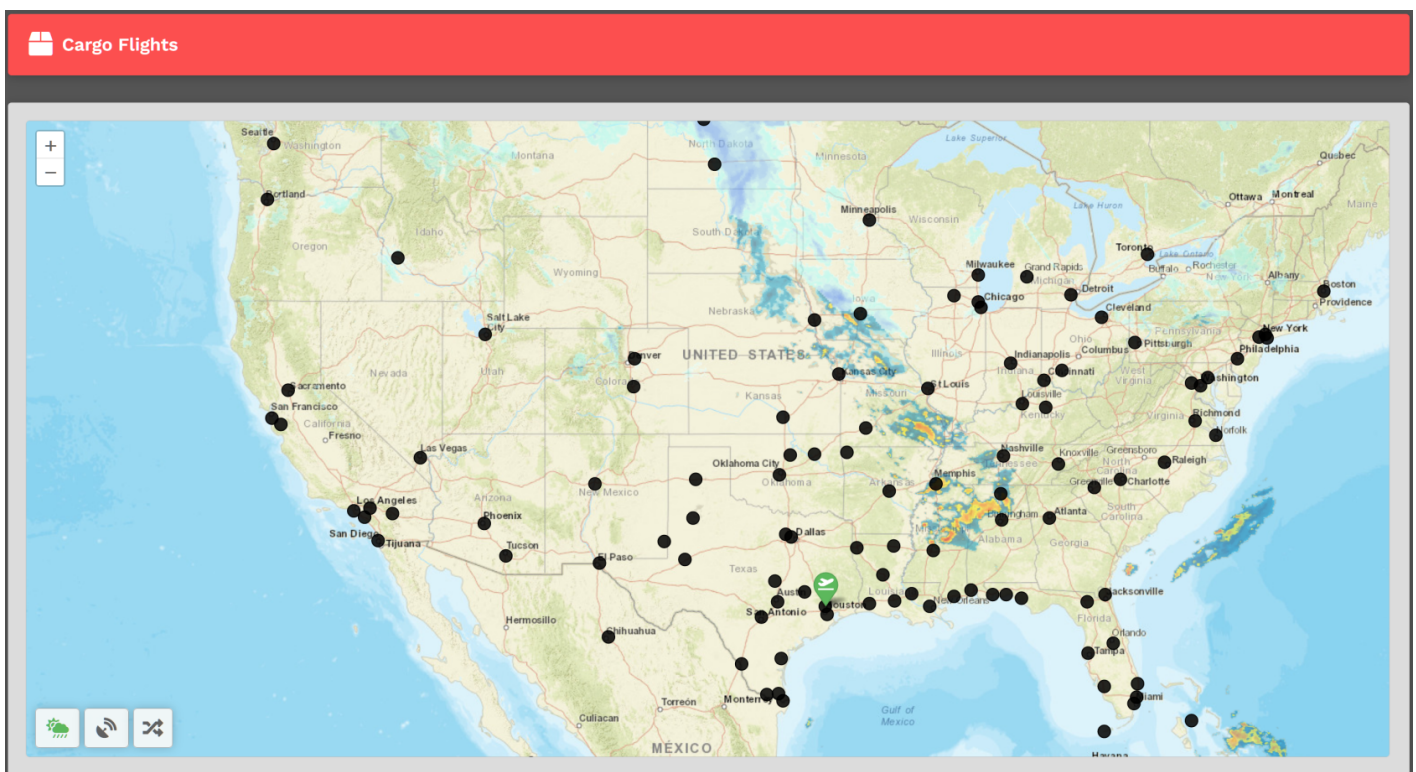
The **Cargo Flight** Module gives Pilots an opportunity to experience life as a 'Freight Dog' for a major Cargo Operation by using real life flight routes, schedules and aircraft.

There are currently **213,542** routes available to you worldwide.

*If you wish to depart from another location, purchase a Jumpseat Ticket to transfer to another airport.*

## Finding a Cargo Flight

In the *Navigation Bar* of the *Crew Ops* website, select **Flights > Cargo**. That will take you to the **Cargo Flights** page.



Upon arrival, you'll be presented with a map. You'll see a departure icon (**Green Map Pin**) and 1 or more arrival pins (**Black Dots**), as well a **Toggle Weather**, **Toggle VATSIM** and **Select Random Arrival** buttons at the bottom left of the screen.

*The map seen above represents its default view. To see the rest of the world, place your cursor on the map and, with your control wheel, zoom in or out.*

The departure location for your next flight is set as follows:

New Pilots	All Other Pilots
New Pilots taking their <b>first flight</b> depart from the <b>Home Airport</b> they requested on registration.	The <i>Arrival Airport</i> of your last <b>Cargo</b> or <b>Scheduled</b> flight.

Mouse over pins/black dots to see the names of the airports with flights available from your departure airport.

Once you find a place to which you'd like to fly, click on its black dot. Lets use KIAH > KSEA as an example.

**IMPORTANT** :: You may only Bid a **new** Cargo flight when no other Cargo Flights have been bid. If you have already bid another flight – or – that flight is already in progress, you'll see this message.

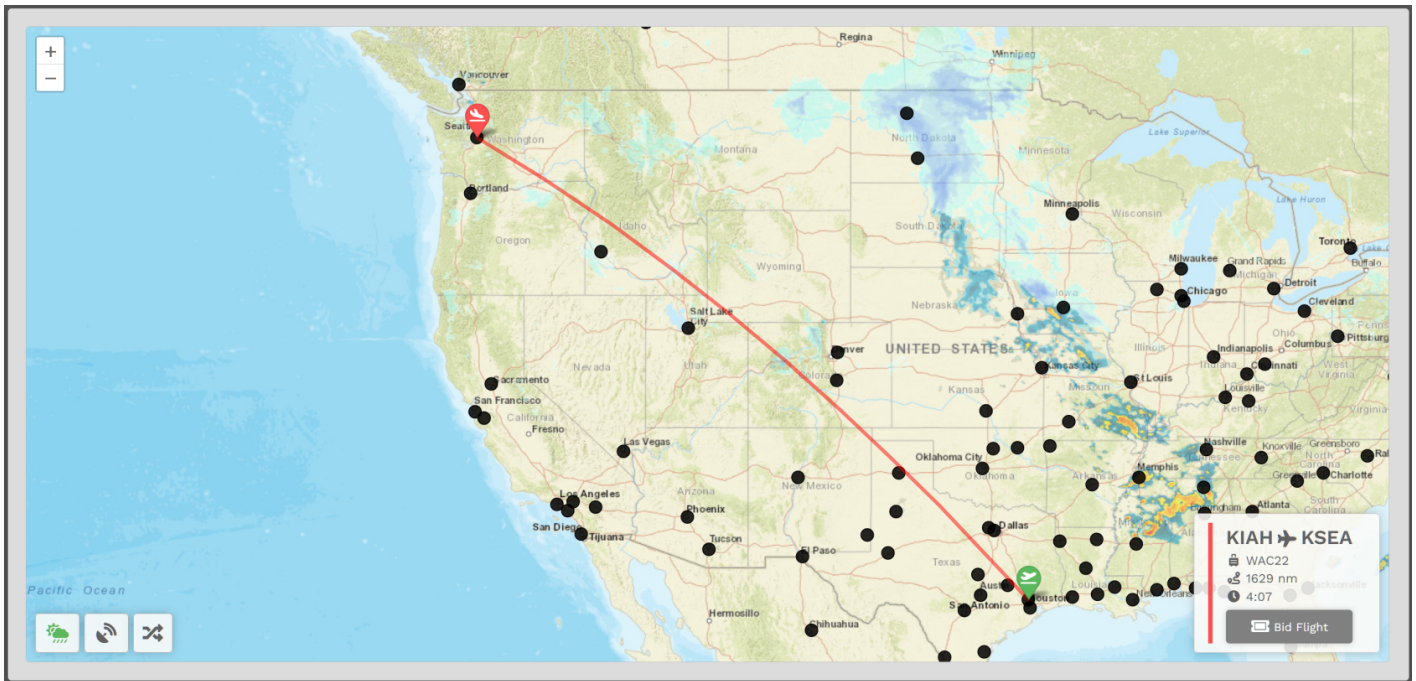
You must complete the flight or cancel it in order to bid a new one.



You have already bid on a flight.

You must complete or cancel that bid before making another.

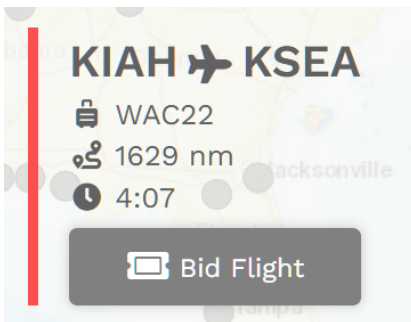
You'll then see your **Flight Bid** appear listing the Flight Number, Distance and Estimated Time Enroute.



The Estimated Time Enroute is only an estimate and does **not** reflect the time in the aircraft you select.

## Bidding a Cargo Flight

Click the **Bid Flight** button to bid on the flight.



After doing so, the confirmation window below will appear.

From the drop-down, select an **Aircraft Type**.

Bid Your Flight
✕

Failure to use our liveries will result in your PIREP being rejected.

Please choose an aircraft...
▼

Book

Cancel

*We allow our Pilots to chose their preferred aircraft type rather than restricted them to one assigned to the flight.*

After selecting your aircraft, click **Book**.

The **Pilot Briefing** will appear signifying the flight has been added your **My Bids** page.

WAC22

BILL HARRIS
KTIW

KIAH

HOUSTON GEORGE BUSH INTERCONTINENTAL AIRPORT
19:50 UTC

METAR

TAF

RUNWAYS

KIAH 171500Z COR VRB05KT 10SM SCT013 BKN027 BKN250  
26/21 A2992 RMK AO2 T02560211

KSEA

SEATTLE TACOMA INTERNATIONAL AIRPORT
00:59 UTC

METAR

TAF

RUNWAYS

KSEA 171453Z 13004KT 10SM FEW030 FEW200 05/00 A3027  
RMK AO2 SLP260 T00500000 51008

+
-

19:50

-30m -15m now +15m +30m

Generate simBrief OFF

Import Latest simBrief OFF

Flight has not been started in your ACARS application





